



PLYmedia Inc.
Brightcove Integration Document



Purpose

The goal of this document is to outline and explain the process for Brightcove integration with PLYmedia's PLYviewer, as well as provide step-by-step instructions for this procedure.

Target Audience

IT personnel, Brightcove account managers/developers, webmasters and Flash developers within companies that utilize Flash player technology and who wish to enable PLYmedia's services in streaming video to the player on their websites.

Table of Contents

Purpose	2
Target Audience.....	2
Table of Contents.....	2
Overview.....	3
Step-by-Step instructions:	3
1. Send PLYmedia Brightcove Player IDs:	3
2. Update Brightcove Player Template:	4



Overview

PLYmedia's player is a transparent Flash Player created and loaded for the purpose of displaying layers (PLYS) on top of a video. The integration process creates a link between the Brightcove Player on the hosting site and PLYmedia's Flash Player, and requires the following set of actions:

- Sending PLYmedia the Brightcove Player IDs utilized by the customer.
- Get an assigned Site Name
- Loading PLYmedia's transparent player (plyViewer.swf) on top of your Brightcove player using Brightcove template editor.

Step-by-Step instructions:

1. Send PLYmedia Brightcove Player IDs:

In order for PLYmedia to server specific content to a specific video for a specific customer, PLYmedia utilizes Brightcove unique URL per video. A Brightcove unique URL has the following structure:

`http://link.brightcove.com/services/player/bcpid{PlayerID}?bctid={BrightcoveVideoID}`

PLYmedia uses the PlayerID value to assign the video to a customer, and the BrightcoveVideoID to assign content per video.

Also to allow extra features per customer, PLYmedia assigns a SiteName per customer, this will be sent to you after the Player IDs are sent.

Before integrating please send PLYmedia (gal@plymedia.com) all the PlayerIDs you are going to integrate.



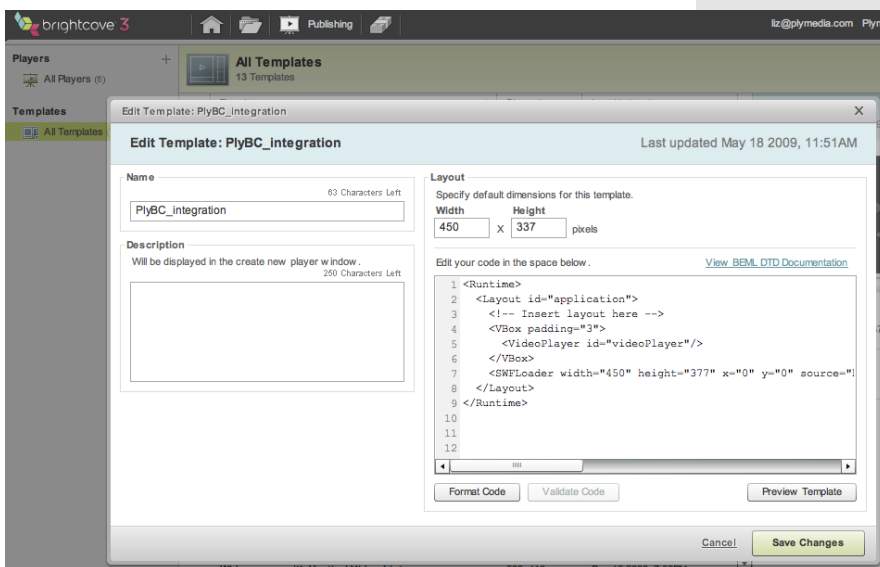
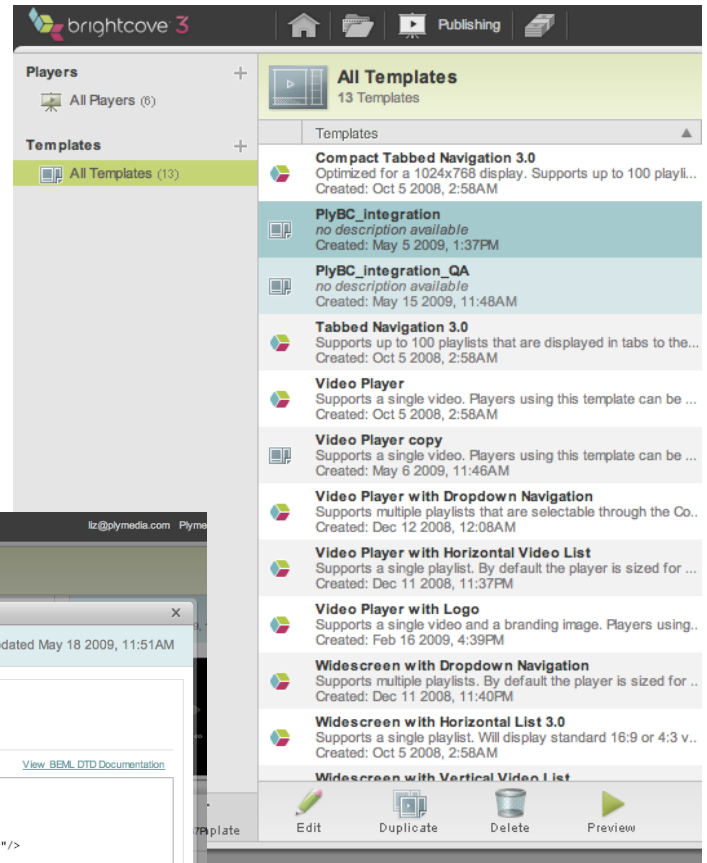
2. Update Brightcove Player Template:

Go to the publishing section on your BrightCove account. Open you player template and press on the 'Edit' button.

In the window that will open you will be able to edit your Layout of the template.

A simple layout should look like this :

```
<Runtime>
  <Layout id="application">
    <!-- Insert layout here -->
    <VBox padding="3">
      <VideoPlayer id="videoPlayer"/>
    </VBox>
  </Layout>
</Runtime>
```



In order to add the Plymedia component you will need to add this line to your layout :

```
<SWFLoader width="450" height="377" x="0" y="0"
source="http://content.plymedia.com/Players/default/BrightCoveAS3"
depth="2"/>
```

In order for PLYmedia to support additional features please revise the SWFLoader to url to include the SiteName supplied to you by PLYmedia:

```
http://content.plymedia.com/Players/{SiteName}/BrightCoveAS3
```

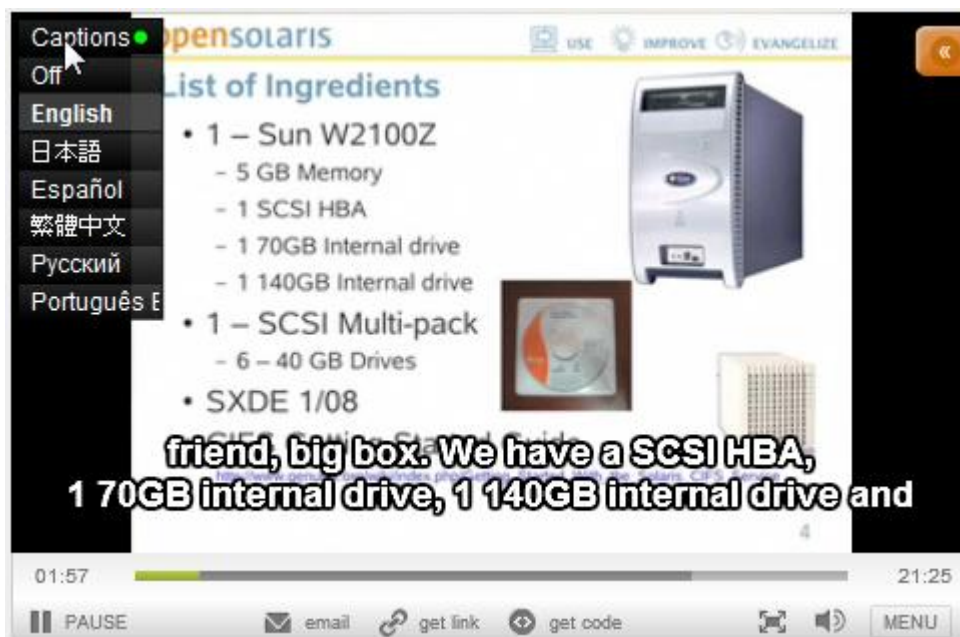


And here how the final layout should look like :

```
<Runtime>
  <Layout id="application">
    <!-- Insert layout here -->
    <VBox padding="3">
      <VideoPlayer id="videoPlayer"/>
    </VBox>
    <SWFLoader width="450" height="377" x="0" y="0"
      source="http://content.plymedia.com/Players/default/BrightCoveAS3"
      depth="2"/>
  </Layout>
</Runtime>
```

After this process is done make sure that the template is attached to your player, this is done in the Players section in your BrightCove account.

Once it is attached to your player the integration is done and you should have the Plymedia component running on your player.



In order to add the ability to create, save & modify PLYs on your site, and with any integration related questions you might have, please contact our technical department:

PLYmedia Inc.

Support@PLYmedia.com